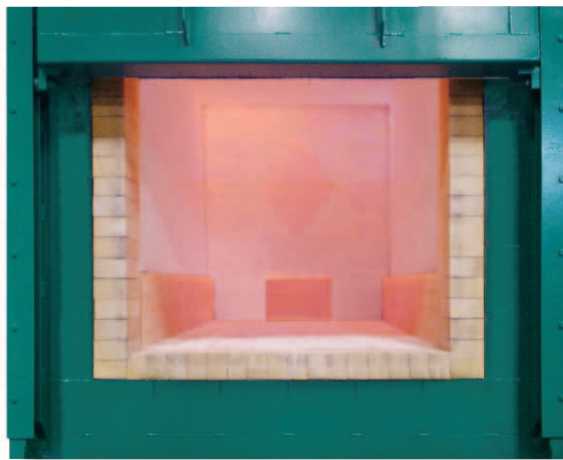


# Large Animal Incinerator

from *Cremation Systems*



*Drawing from more than 40 years of experience in industrial process furnace manufacturing, our cremation equipment is built with the latest advancements in combustion, control and refractory technology.*

## Features Include:

- Simple one-step, automatic operation
- High efficiency refractory lining
- Automatic emission monitoring
- Front loading and retrieval through extra-wide door
- Meets all applicable NFPA and UL standards



## General Dimensions:

Height: 14' 11¼" (top of afterburner less flue)  
Width: 8' plus control panel  
Length: 13' 11" less blower  
Hearth size: 48" wide x 89" long  
Door opening: 48" wide x 48" high  
Approx. weight: 17,000 lbs

## Utility Requirements:

Natural gas: 1000 Btu/cu ft  
2000 scfh at 2.0 psig  
Electrical: 480 vAC, 3 phase,  
60 Hz, 10 amp  
Compressed Air: 25 scfm at 80 psig  
Cremation rate: 200lbs/hr



**Cremation  
Systems™**

Division of Armil/CFS, Inc.

15660 South LaSalle Street  
South Holland, IL 60473

708-339-6810

Fax: 708-339-0517

[www.cremsys.com](http://www.cremsys.com)

[info@cremsys.com](mailto:info@cremsys.com)

*Dignified, Self-Contained  
Turnkey Crematoriums*

© 2010, Cremation Systems