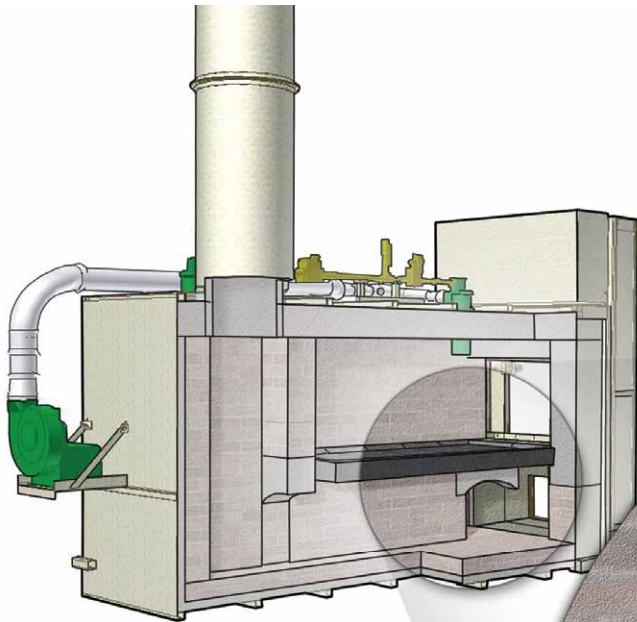
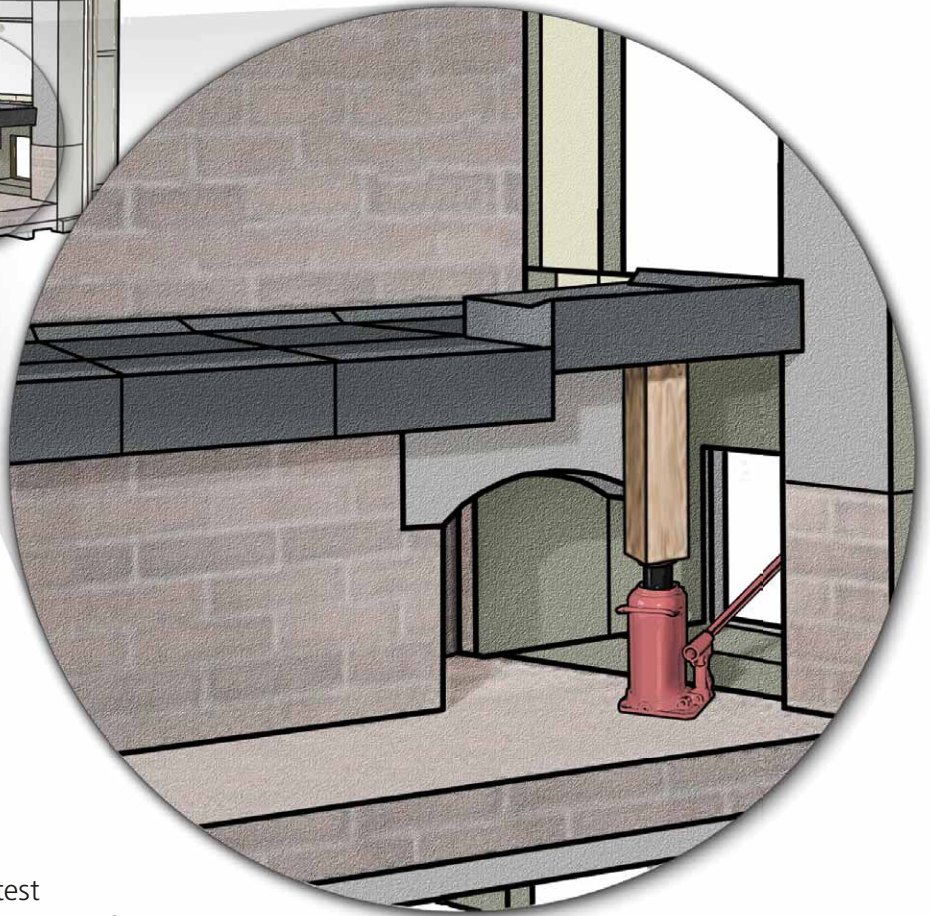


The **Quick Change** Modular Hearth Tile System

by **Cremation Systems**



Hearth tiles are removed by placing a wooden block on a bottle jack and raising a front tile. Once it clears the upper surface of the hearth, the tile slides onto the hearth and out of the chamber. The other front tile can then be pulled up and out of the chamber.



The hearth of a cremator wears due to high temperatures, chemical attack, thermal shock and the abrasive elements it endures during normal operation; a typical hearth may last 2,000 cremations. Cremation Systems' **Quick Change** modular hearth tile system utilizes pre-cast refractory tile specially designed to offer the highest resistance to these adverse conditions.

Our **Quick Change** system offers the fastest repair option in the industry, eliminating the need for jackhammers, refractory mixers, specialized labor and curing, which are required when replacing a traditional cast-in-place hearth. Our **Quick Change** system allows quick and easy replacement of worn tiles only, or the entire hearth if necessary.

Plus, our **Quick Change** system is always in stock.

Cremation Systems offers complete turnkey crematoriums, cremation chambers, and a wide range of products and services, including combustion and control, refractory repair, and complete cremator rebuild.



CFS-2300
Cremation Chamber
Made in Illinois!